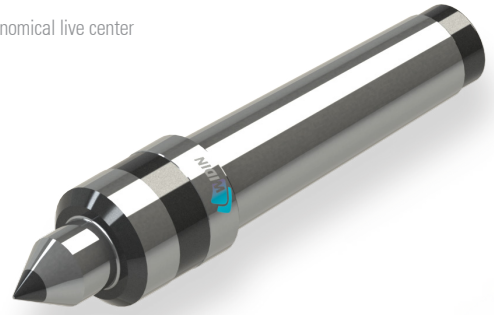
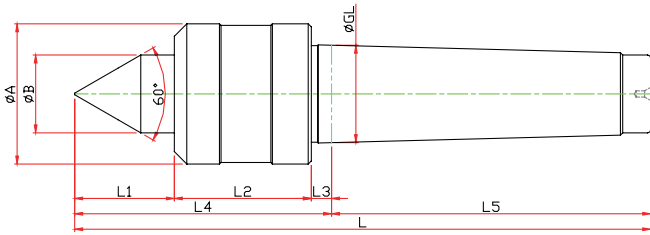


HDSC-TYPE

※ 보급형 라이브센터 Economical live center



Model	Order Number	Morse Taper	Dimension									Weight MAX.	R.P.M MAX.	Run Out
			GL	A	B	L1	L2	L3	L4	L5	L			
LC-1HD	070001	NO.1	12.065	34	15	21	37	3.5	61.5	53.5	115	120	5000	0.003
LC-2HD	070002	NO.2	17.780	40	18	24	37	5	66	64	130	140	4000	0.003
LC-3HD	070003	NO.3	23.825	45	25	32	44	5	81	81	162	190	3800	0.003
LC-4HD	070004	NO.4	31.267	45	25	32	44	6.5	82.5	102.5	185	190	3800	0.003
LC-5HD	070005	NO.5	44.399	78	38	47	66	6.5	119.5	129.5	249	350	2000	0.005
LC-6HD	070006	NO.6	63.384	102	55	62	82	8	152	182	334	1200	2000	0.005

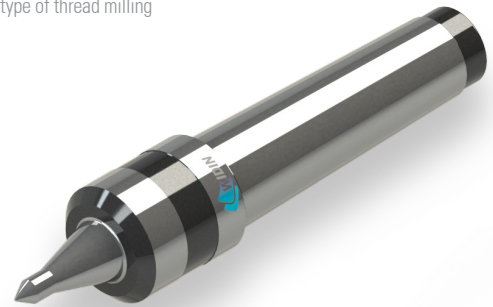
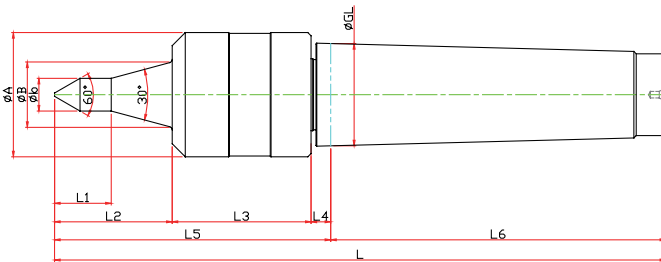
HDSTH-TYPE

※ 보급형 센터 Economical Center

※ 범용장비 사용에 적합 Suitable for lathe

※ 적정 RPM(3800)이하 Optimal RPM(below 3,800)

※ 나사가공전용 타입 The type of thread milling



Model	Order Number	Morse Taper	Dimension											Weight MAX.	R.P.M MAX.	Run Out	
			GL	A	B	b	L1	L2	L3	L4	L5	L6	L				
LC-3HDSTH-06	073011	NO.3	23.825	36	18	6	12.6	35	40.5	5	80.5	81	161.5	55			
LC-3HDSTH-08	073012					8	16.3										
LC-3HDSTH-10	073013					10	20.1										
LC-3HDSTH-12	073014				12	23.8											
LC-4HDSTH-06	074011	NO.4	31.267	38	20	6	10.1	36.2	40.5	6	84.5	102.5	187	65	3800	0.003	
LC-4HDSTH-08	074012					8	13.9										
LC-4HDSTH-10	074013					10	17.6										
LC-4HDSTH-12	074014					12	21.3										
LC-5HDSTH-06	075011	NO.5	44.399	64	24	6	13.4	47	56.5	10	113.5	129.5	243	150			
LC-5HDSTH-08	075012					8	17.1										
LC-5HDSTH-10	075013					10	20.8										
LC-4HDSTH-12	075014					12	24.6										

HD SPECIAL



08

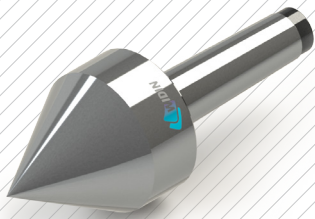
PT-TYPE

- PIPE 가공 전용
- 적정 RPM(3800이하)
- For PIPE machining
- Optimal RPM(below 3,800)



PT-60 TYPE

PIPE 가공 전용 For PIPE machining
적정 RPM(3800)이하 Optimal RPM(below 3,800)



PT-80 TYPE

PIPE 가공 전용 For PIPE machining
적정 RPM(3800)이하 Optimal RPM(below 3,800)

